

Bou Chalhoub EST.

Company Profile

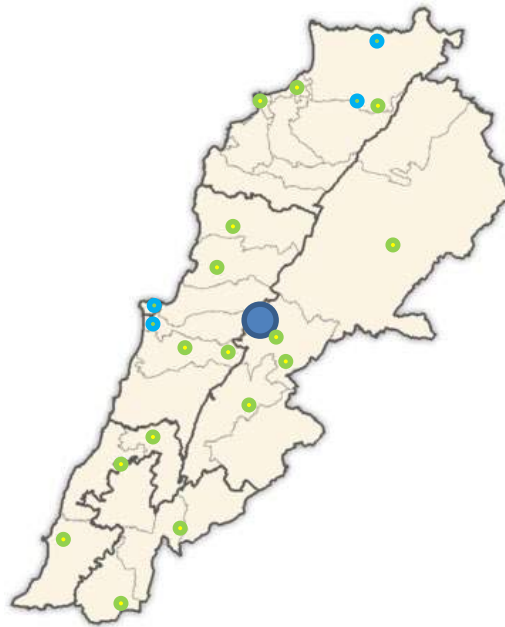
Waste Treatment Department

January 2020



Where we are

BOU CHALHOUB Est. Workshop and offices is located in the industrial City of Zahle – Lebanon



- Bou Chalhoub Headquarters
- Waste-treatment Projects supplied and installed
- Ongoing Waste-treatment projects

Who we are

BOU CHALHOUB Est. is a family business founded by Tony Bou Chalhoub in 1966.

The core of the business is the production of different kinds of mechanical processing equipments for different kind of industries (food, agriculture, feed, cement... and most recently solid waste)



One of our first Machines

Who we are

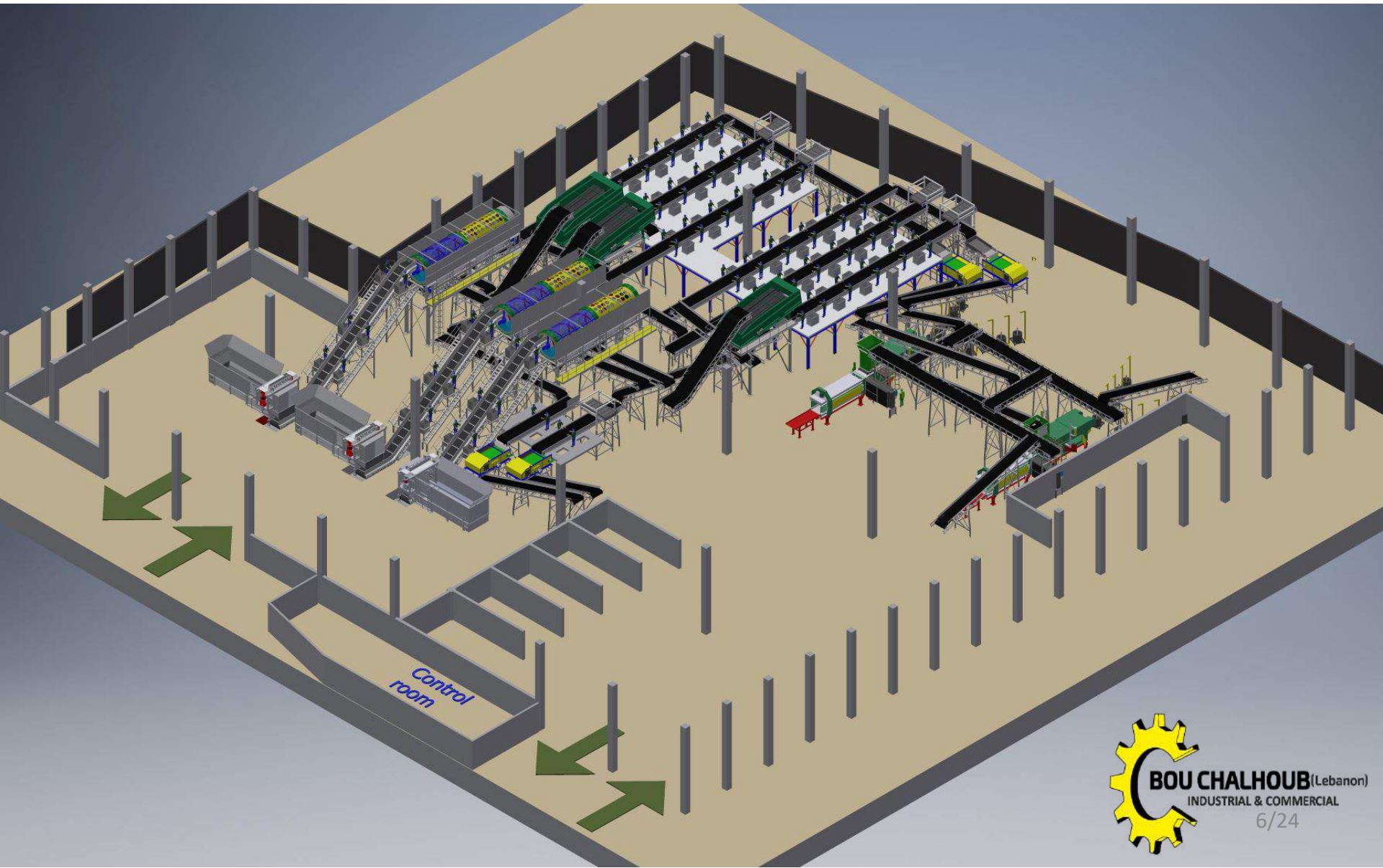
Through the years, and to enhance the technical capabilities and develop its “know how”, BOU CHALHOUB Est. established different partnerships with European companies (such as Pezzolato SpA ,Gauss Magneti SRL, KOMPTECH GmbH, Matthiessen Lagerthechnik, UNTHA, etc)



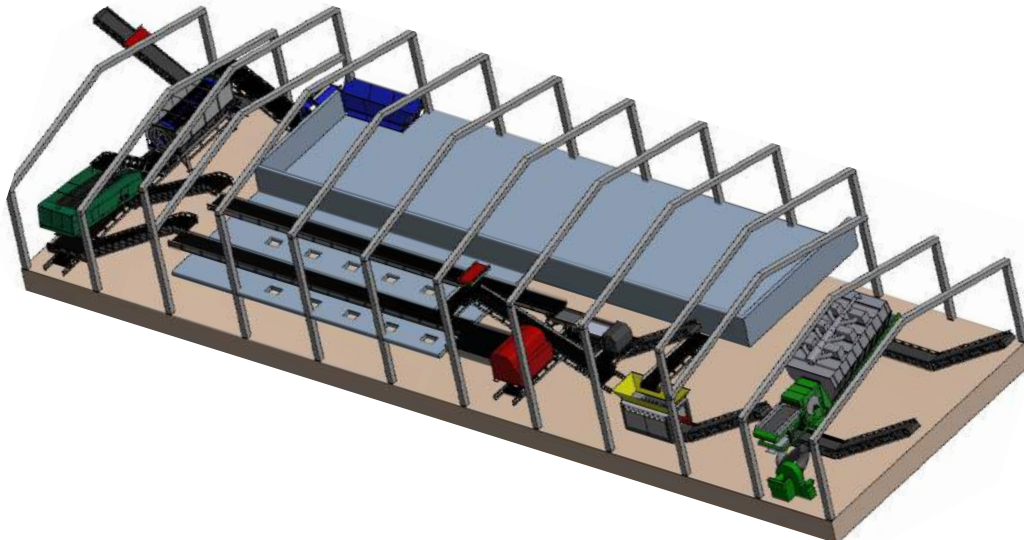
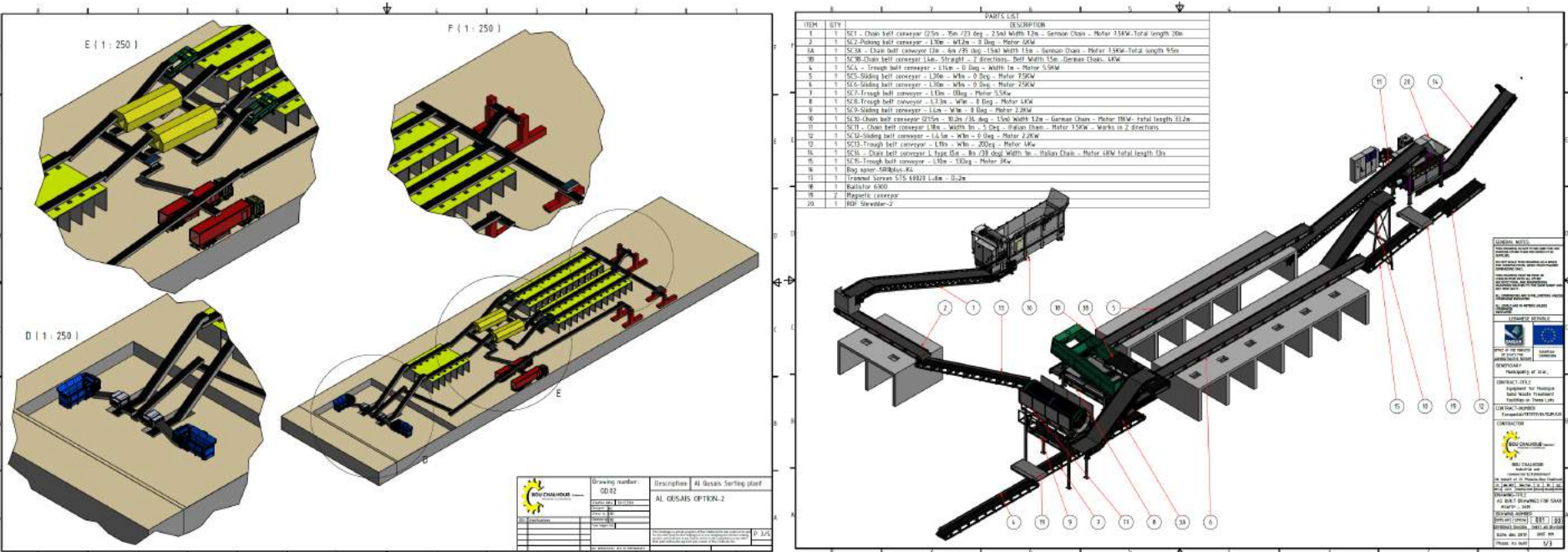
What we do in the waste treatment industry:

- Design & Engineering
- Manufacturing
- Installation, Testing & Commissioning
- Maintenance

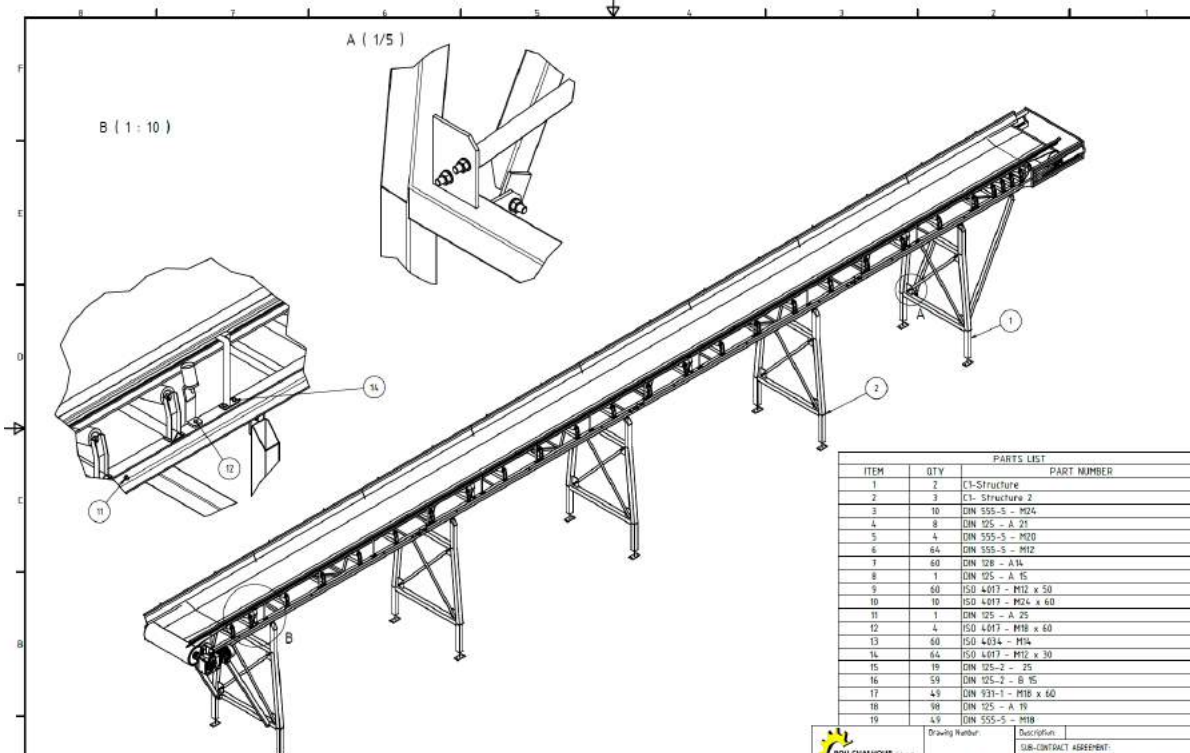
DESIGN



DESIGN



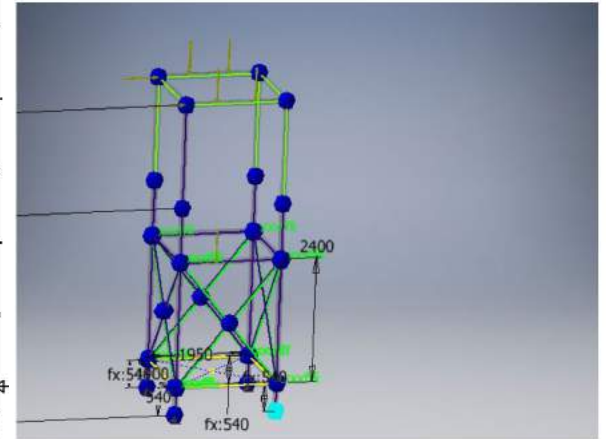
DESIGN & ENGINEERING



ITEM	QTY	PARTS LIST	PART NUMBER
1	2	C1-Structure	
2	3	C1-Structure 2	
3	10	DIN 555-S - M24	
4	8	DIN 925 - A 27	
5	4	DIN 555-S - M20	
6	64	DIN 555-S - M12	
7	60	DIN 128 - A14	
8	1	DIN 125 - A 15	
9	60	ISO 4017 - M12 x 50	
10	10	ISO 4017 - M24 x 60	
11	1	DIN 125 - A 25	
12	4	ISO 4017 - M18 x 60	
13	60	ISO 4034 - M14	
14	60	ISO 4017 - M12 x 30	
15	19	DIN 125-2 - 25	
16	59	DIN 125-2 - 16	
17	49	DIN 931-1 - M18 x 60	
18	98	DIN 125 - A 10	
19	19	DIN 555-S - M18	



Drawings Number: 0000000000
 SUB-CONTRACT AGREEMENT:
 "SPELACING OF THE EXISTING EXISTING PLANTS"
 AT KALIA
 NEW SOT
 Date: 6/28/2019
 Drawn by: 0000000000
 Checked by: 0000000000
 Approved by: 0000000000

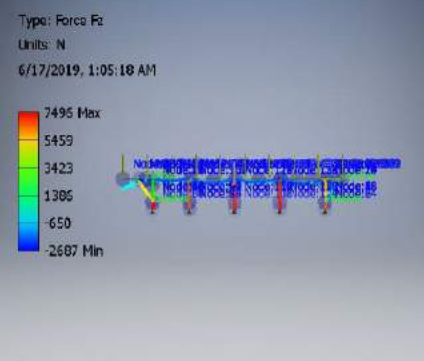
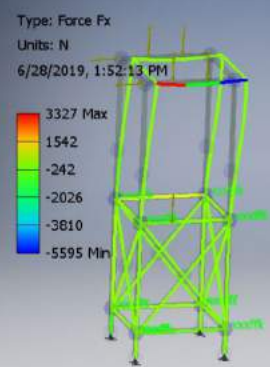
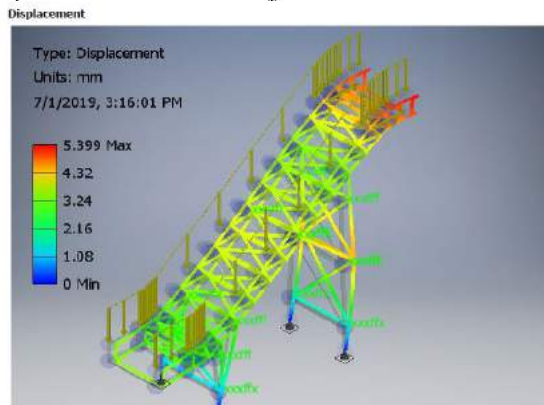
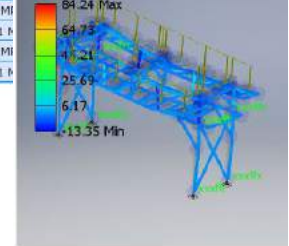
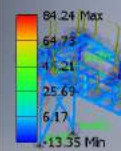


Results

Static Result Summary

Name	Minimum	Maximum
Displacement	0.000 mm	7.521 mm
Forces		
Fx	-5594.608 N	3326.706 N
Fy	-5593.199 N	3328.115 N
Fz	-2017.499 N	10613.9
Moments		
Mx	-2103703.102 N mm	2100430
My	-2063725.759 N mm	2101239
Mz	-6222.814 N mm	4629.74
Smax	-9.304 MPa	58.357 MPa
Smin	-64.898 MPa	1.708 MPa
		59.411 MPa
		0.000 MPa
		59.341 MPa

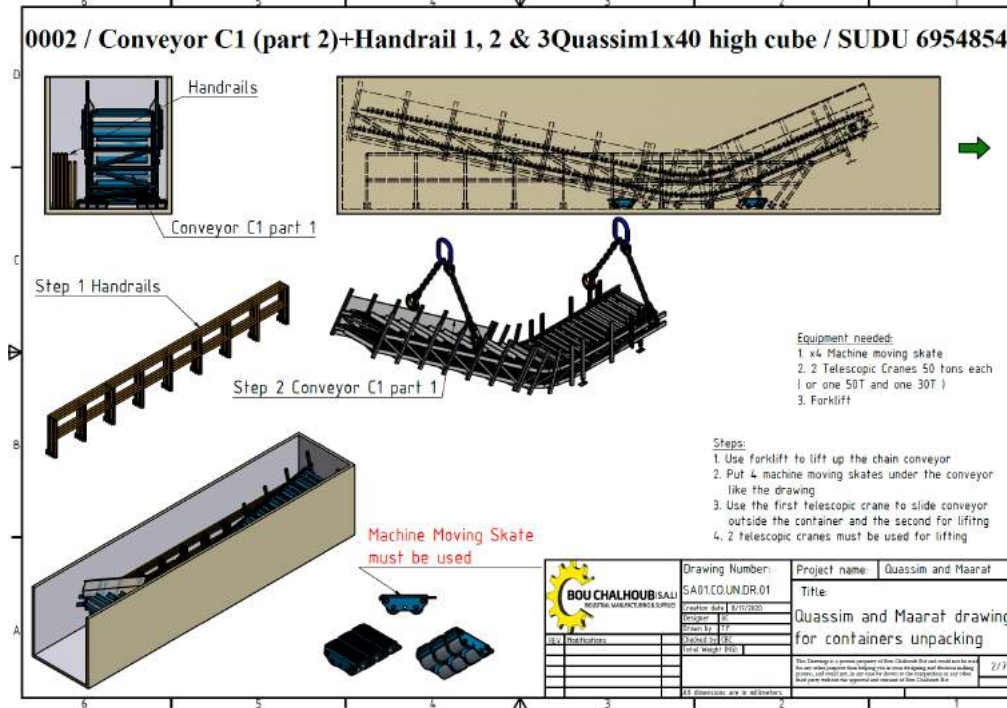
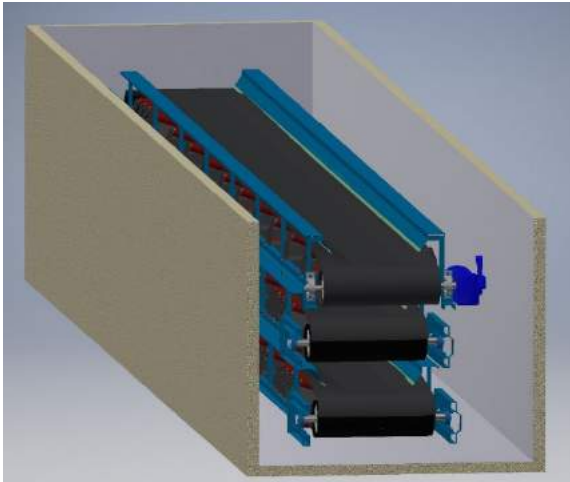
Type: Shear Stress Ty
 Units: MPa
 6/28/2019, 2:05:01 AM



MANUFACTURING



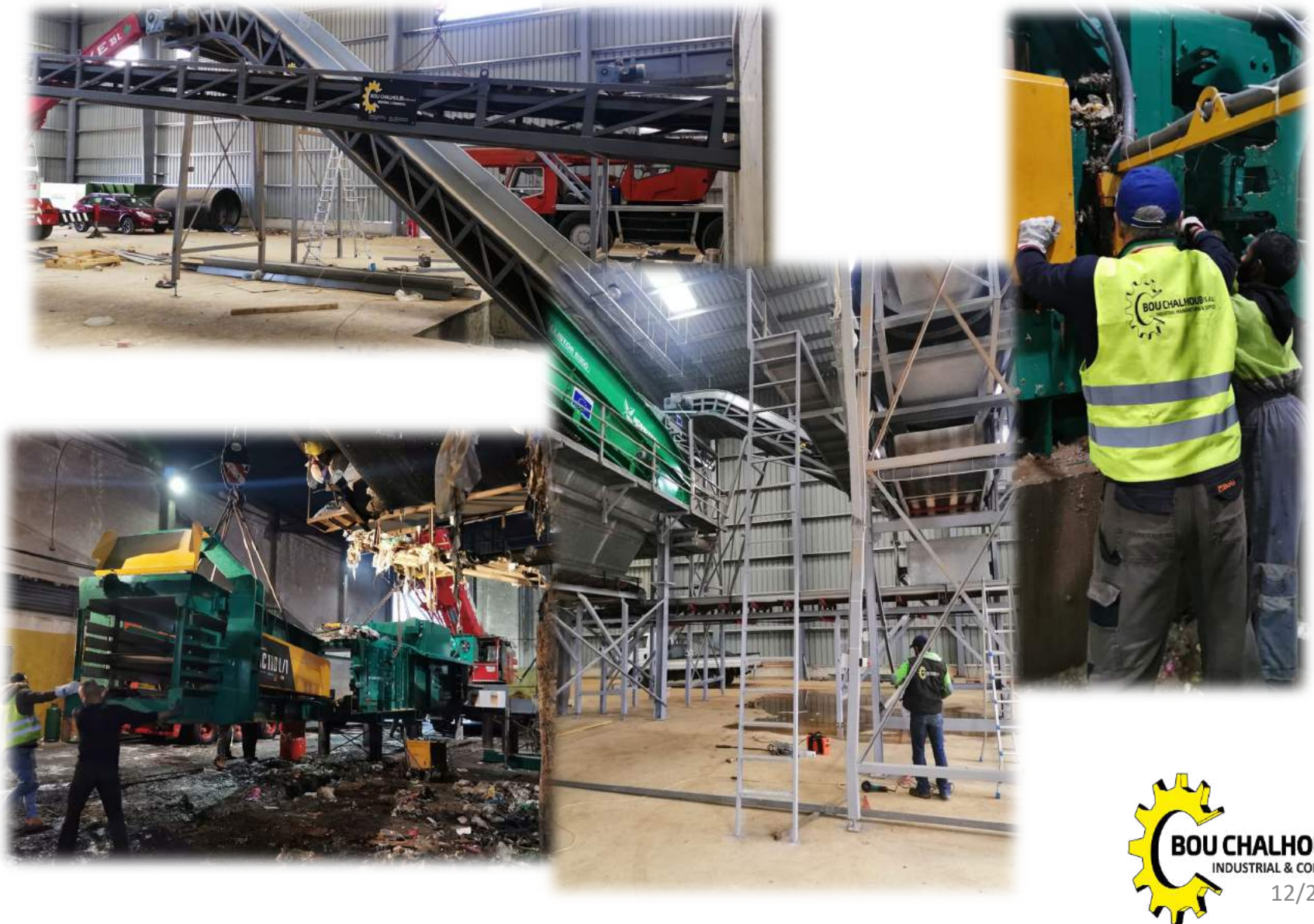
TRANSPORTATION



INSTALLATION



INSTALLATION



MAINTENANCE



**And here are some Video links
showing different plants, supplied,
installed, tested and commissioned
by Bou Chalhoub Est.**

- <https://www.youtube.com/watch?v=saorXGJJZpA>
- <https://www.youtube.com/watch?v=4Eu9UbfgsAQ>
- <https://www.youtube.com/watch?v=sb2LaE5xfY4>
- <https://www.youtube.com/watch?v=m3JgP2ulcvM>
- <https://www.youtube.com/watch?v=EyrFV63XsgY>
- <https://www.youtube.com/watch?v=2en1pvPufM8>
- <https://www.youtube.com/watch?v=MLvlqMt1T6s>
- <https://www.dropbox.com/s/4nic7re4khxtiqy/Solid%20Waste%20Sorting%20Line%20Tyre.mp4?dl=0>
- <https://www.dropbox.com/s/gp6hlsbbl8iznri/Zahle%20Waste%20sorting%20plant.mp4?dl=0>

References in the waste treatment industry

Since 2006, and after the implementation by CHF-USAID of the solid waste treatment plant in our City, Zahle, BOU CHALHOUB Est. has been involved in several solid waste treatment plants in Lebanon, and here is a list of some of these projects:

- 2006 : Main Suppliers for the Zahle solid waste treatment plant, Zahle-Lebanon
- 2007-2008 : Main Suppliers of the first Shouf-Swaijani Treatment plant, Shouf-Lebanon
- 2007-2008 : All equipments with shredders for the Ansar Solid waste Treatment plant, South-Lebanon
- 2008-2009 : All equipments with shredders for the Khiyam Solid waste treatment plant, South-Lebanon
- 2008-2009 : RDF & Olive Grinds feeding line for the HOLCIM cement Factory in Chekka-Heri – Lebanon
- 2010 -2011 : Main Suppliers for the MSWTP in Mahmoudiya – Baghdad - Iraq
- 2010-2011 : All equipments with shredders for the Michmich Solid waste treatment plant, Akkar-Lebanon
- 2011 : Supply & Installation of Compost turning machine to Qabrikha – South of Lebanon
- 2012 : Supply & Installation of different new equipments for the Ain Baal MSW treatment plant – Lebanon
- 2012 : Supply & Installation of complete line for the Baalbeck MSW treatment plant (15T/hour) – Lebanon
- 2012 : Supply & Installation of Compost turning machine to Khiam municipality – South of Lebanon
- 2013 : RDF and Olive grinds feeding line for HOLCIM – SLCB Plant – Chekka - Lebanon
- 2013-2014 : Supply & Installation of all equipments for the MSWTP in Kfour Village (15T/hour) – Nabatiyeh – Lebanon
- 2014-2015 : Supply & Installation of a complete RDF Pyrolysis feedstock preparation plant – UTM - INDEVCO group – Halat - Lebanon
- 2015-2017 : Supply & Installation of different conveyors, baling presses and composting drum for Arcenciel – Lebanon
- 2015 : Supply & Installation of the Complete Sorting line for the MSWTP in Baadaran – Shouf - Lebanon
- 2015-2016 : Supply & Installation of an RDF Shredder to UTM – INDEVCO group – Halat – Lebanon
- 2015-2016 : Complete Supply & Installation of all equipment to the BarElias MSWTP (15T/hour) –Lebanon
- 2016 : Supply & Installation of 2x complete sorting lines for MSW in Dafra Landfill (25T/hour)– Abu Dhabi – UAE
- 2016 : Supply & Installation of Trommel Screen & Composting equipments to MSWTP in Minieh (10T/hour) – Lebanon
- 2016 : Supply & Installation of the Complete Sorting line for the MSWTP in Hbaine (10T/hour) – Lebanon
- 2017 : Supply & Installation of the Complete Sorting line for the MSWTP in Tripoli (45T/hour)– Lebanon
- 2017 : Supply & Installation of the complete MSWTP in Joub Jannine (15T/hour) - Lebanon
- 2017 : Supply & Installation of the Complete new plant in Zahle (25T/hour) – Lebanon
- 2017 : Supply & Installation of the main equipment for the MSWTP in Ghosta (15T/hour) – Lebanon
- 2017-2018 : Supply & Installation of the Complete renewed MSWTP for Ain Baal (15T/hour) – Tyr – Lebanon
- 2017-2018 : Supply & Installation of the new conveying system for the Composting plant in Coral - Lebanon
- 2018 : Supply & Installation of the new MSWTP in Shouf Swaijani (10T/h) – Shouf Lebanon
- 2018 : Supply & Installation of the complete New MSWTP in Baalbeck (15T/Hour) – Lebanon
- 2018 - 2019 : Supply & Installation of the complete MSWTP in Srar (25T/hour) – Akkar – Lebanon (ongoing)
- 2019 - 2020 : Supply & Installation of 4x new MSW sorting lines for Beirut – with total capacity of 120T/hour (ongoing)
- 2019 - 2020 : Refurbishing and Supply & Installation of new equipment for 9x sorting lines in Beirut – Lebanon (ongoing)

Municipal Solid Waste treatment Line - Nabatiyeh



Composting of the Organic Fraction of the MSW - Nabatiyeh



Municipal solid waste treatment and composting line - Baalbeck



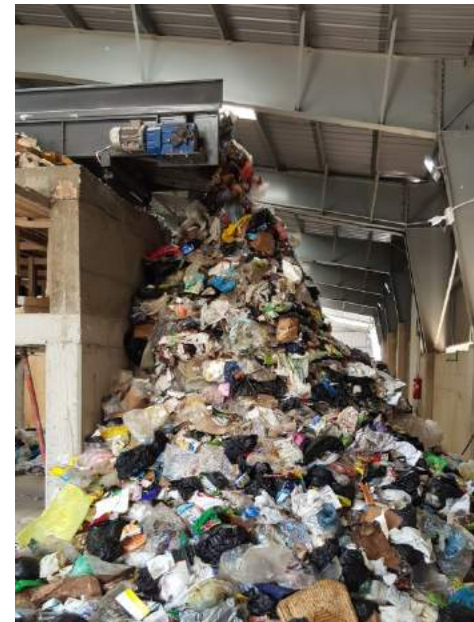
RDF production line – Unipack Tissue Mill - Halat



Manual Sorting line of the MSW – Baadaran - Chouf



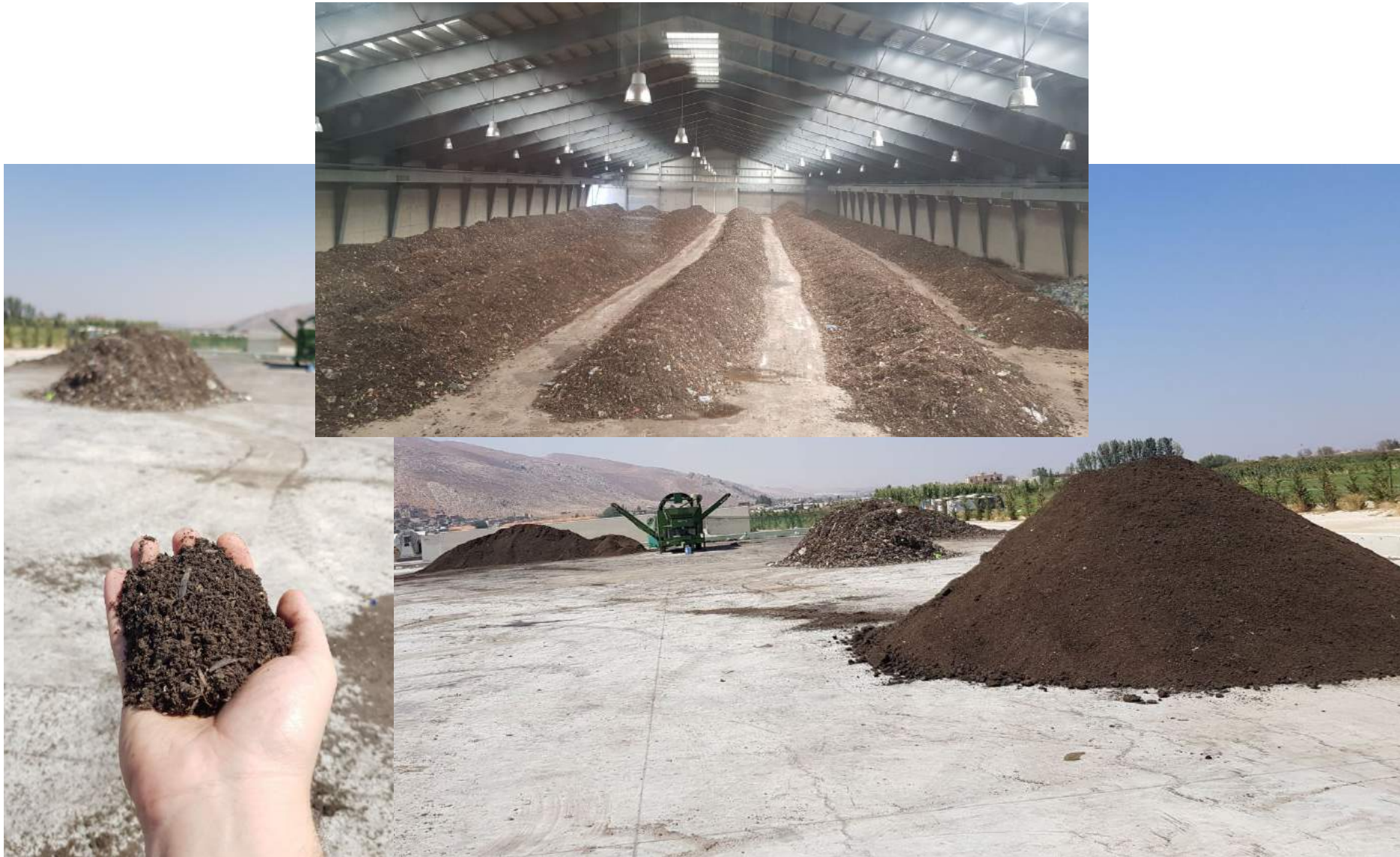
Municipal Solid Waste treatment Line - Tripoli



Municipal Solid Waste treatment Line – Bar Elias



Compost from MSW – Bar Elias





BOU CHALHOUB

Industrial Zone - Zahle - Lebanon

Tel : 00961 8 543088 / 822888

Fax : 00961 8 805315

Website : www.bouchalhoub-est.com

Email : info@bouchalhoub-est.com
charbel@bouchalhoub-est.com

P.O.Box : 173 Zahle